

1 DOI: 10.21608/alexja.2024.306829.1084


2 **Fast assessment of phylogenetic diversity among five *Hyacinthus***
3 ***orientalis* cultivars using molecular markers**


4 **Hany M. El-Naggar¹  . Amira R. Osman² **

5 ¹ Department of Floriculture, Faculty of Agriculture, Alexandria University (El-Shatby), Alexandria 21545, Egypt.

6 ² Department of Horticulture, Faculty of Agriculture, Damanhour University, Damanhour 22516, Beheira, Egypt.

7 * Correspondence: hany.elnagar@alexu.edu.eg (H.M.E.-N.); amira.ramadan@agr.dmu.edu.eg (A.R.O.); Tel.: +20-100-734-0409
8 (H.M.E.-N.); +20-128-913-3832 (A.R.O.).

9 - **Hany M. El-Naggar¹**, Department of Floriculture, Faculty of Agriculture, Alexandria University 21545, Alexandria, Egypt. E-
10 mail: hanyelnaggar@hotmail.com, hany.elnagar@alexu.edu.eg. Tel.: +20-100-734-0409  ORCID ID: [https://orcid.org/0000-](https://orcid.org/0000-0002-9579-627X)
11 [0002-9579-627X](https://orcid.org/0002-9579-627X). **First and corresponding author.**

12 - **Amira R. Osman²**, Department of Horticulture, Faculty of Agriculture, Damanhour University 22516, Egypt. E-mail:
13 osmanami1@hotmail.com, amira.ramadan@agr.dmu.edu.eg. Tel.: +20-128-913-3832  ORCID ID: [https://orcid.org/0000-0001-](https://orcid.org/0000-0001-7497-6426)
14 [7497-6426](https://orcid.org/0000-0001-7497-6426). **Second and corresponding author.**

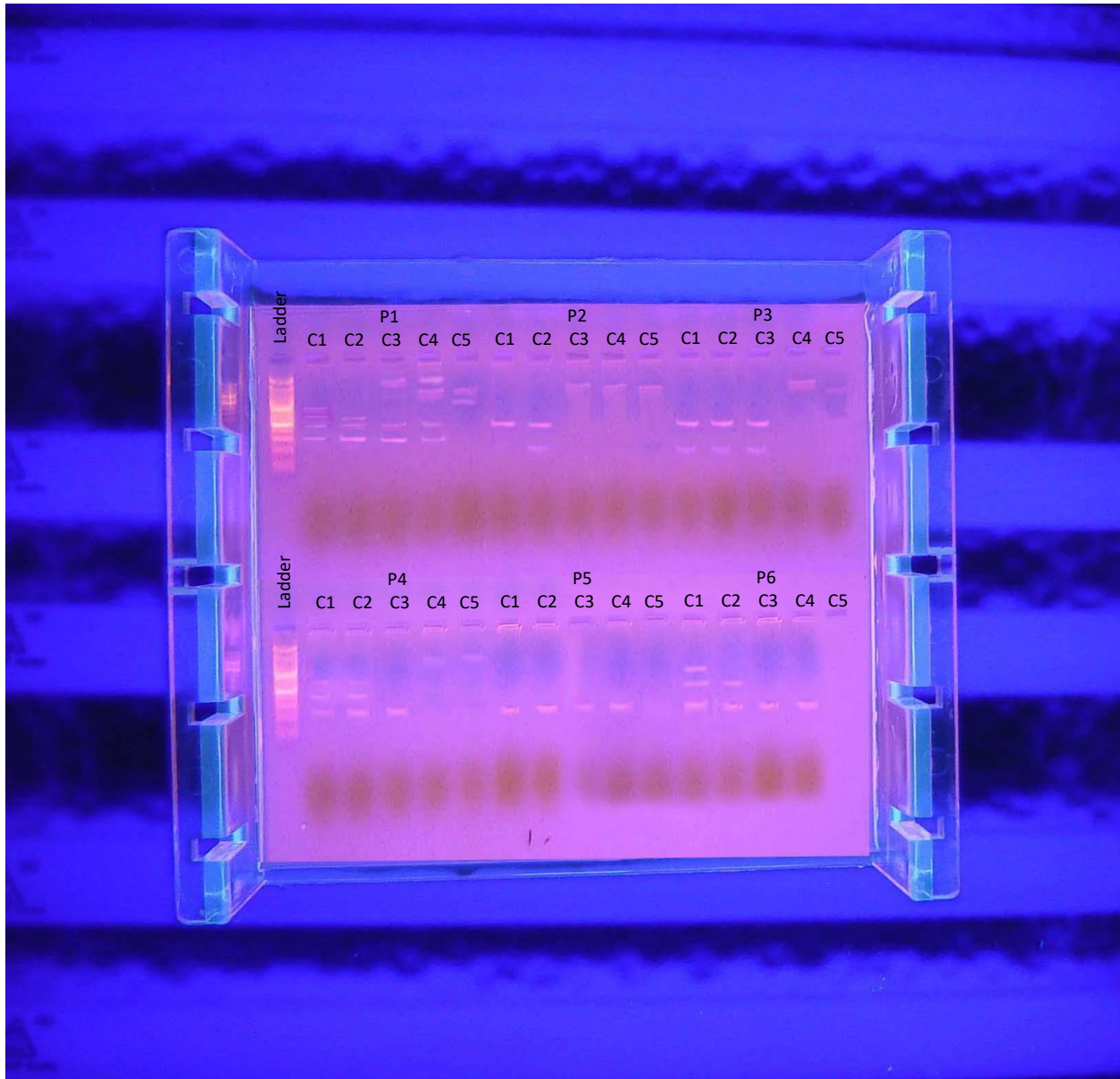
15

16

17 **Appendix A**

18 **Gel electrophoresis of the RAPD-PCR reaction under UV transilluminator light**

19 Original picture of the documentation unit showing band sizes ranging from 200 to 1300 bps. C1 to C5
20 represent Pink Pearl, Jan Bos, Blue Pearl, Serene Blue, and White Pearl cultivars, respectively. P1 to P6 are
21 the six universal primers OPC-12, OPD-05, OPH-20, UBC-231, UBC-245, and UBC-261 respectively.
22 Agarose gel 1.5% stained with ethidium bromide in (1x) TBE buffer using a Cleaver horizontal gel
23 electrophoresis unit for gel electrophoresis (Fig. S1).



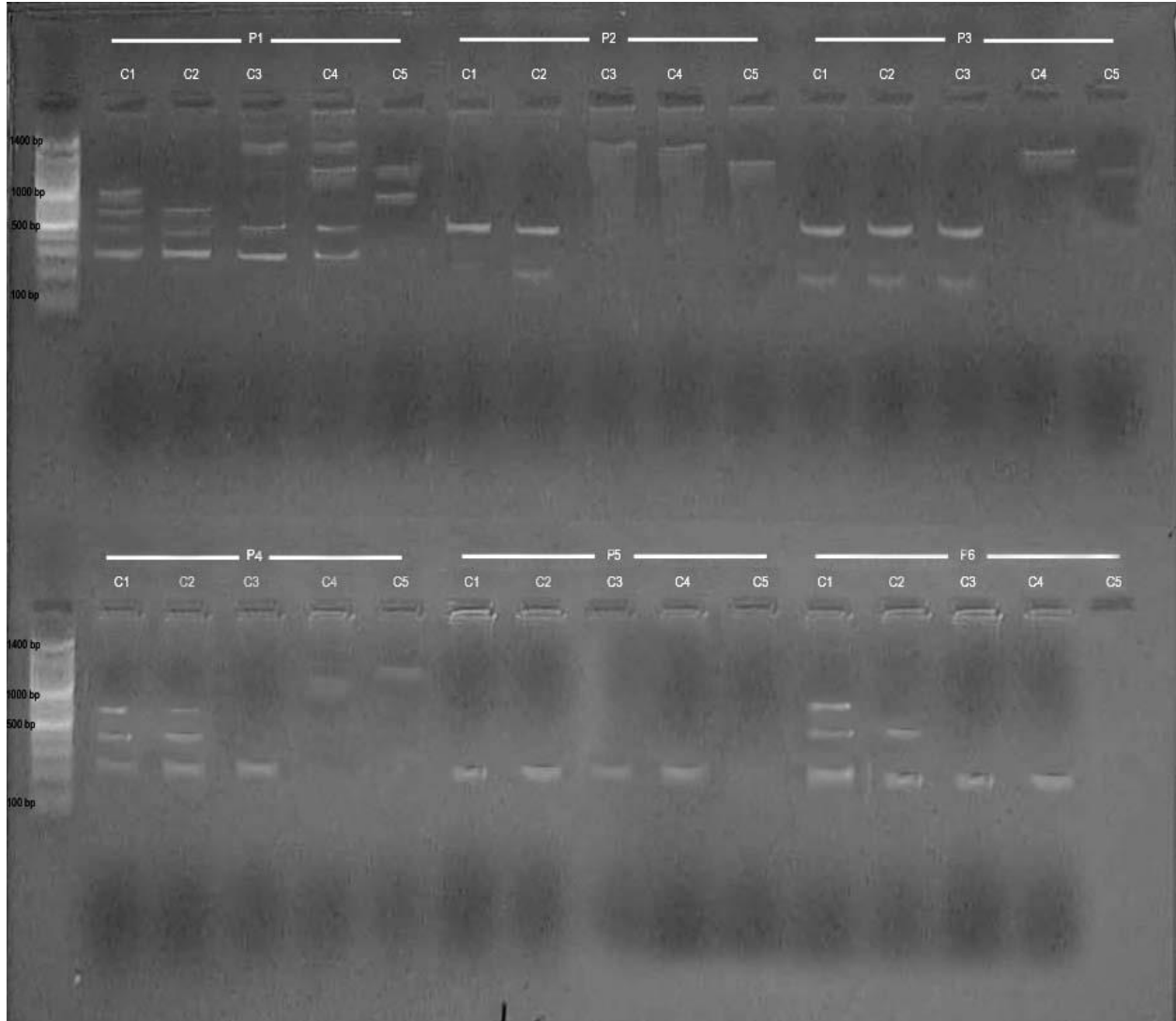
24

25 **Fig. S1** Gel electrophoresis of the RAPD-PCR reaction under a UV transilluminator light documentation
26 unit showing band sizes ranging from 200 to 1300 bps. C1 to C5 represent Pink Pearl, Jan Bos, Blue Pearl,
27 Serene Blue, and White Pearl cultivars, respectively. P1 to P6 are the six universal primers OPC-12, OPD-
28 05, OPH-20, UBC-231, UBC-245, and UBC-261, respectively. Agarose gel 1.5% stained with ethidium
29 bromide in (1x) TBE buffer was used for gel electrophoresis.

30 **Appendix B**

31 **Black and white gel electrophoresis picture of the RAPD-PCR reaction**

32 C1 to C5 represent Pink Pearl, Jan Bos, Blue Pearl, Serene Blue, and White Pearl cultivars, respectively. P1 to P6 are
33 the six universal primers OPC-12, OPD-05, OPH-20, UBC-231, UBC-245, and UBC-261 respectively.
34



35
36 **Fig. S2** Black and white gel electrophoresis picture of the RAPD-PCR reaction. C1 to C5 represent Pink
37 Pearl, Jan Bos, Blue Pearl, Serene Blue, and White Pearl cultivars, respectively. P1 to P6 are the six
38 universal primers OPC-12, OPD-05, OPH-20, UBC-231, UBC-245, and UBC-261 respectively (Fig. S2).
39